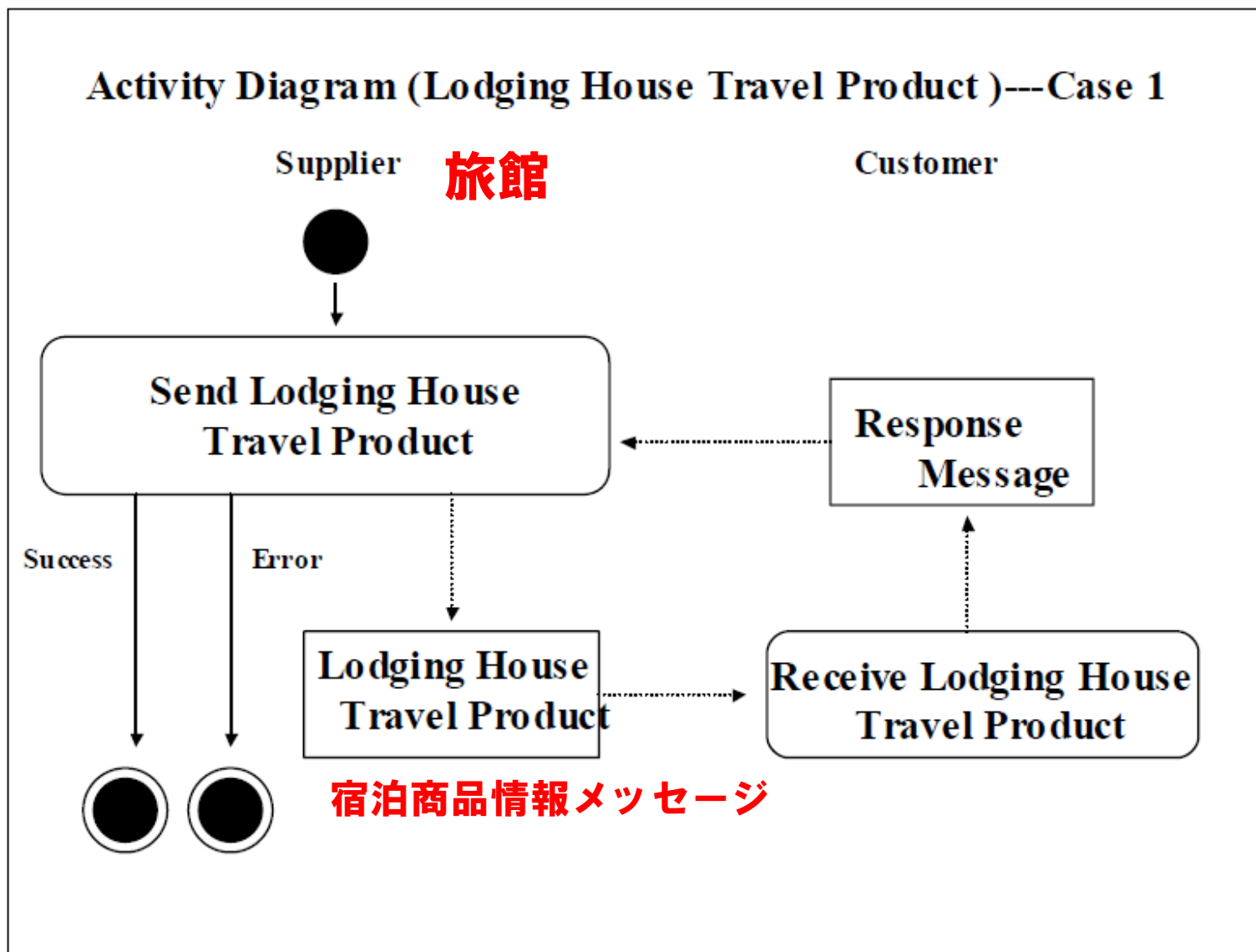


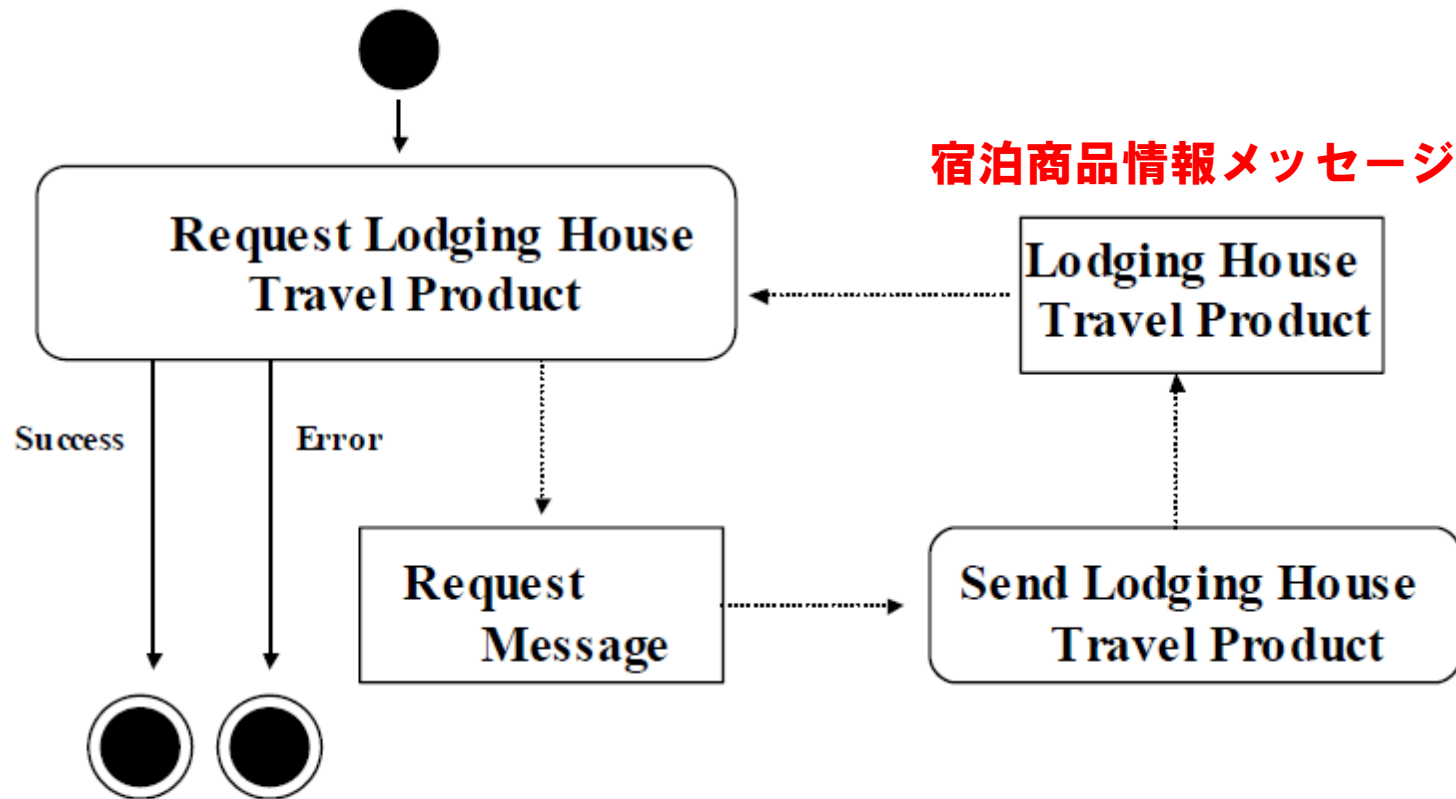
宿泊商品情報提供/照会



Activity Diagram (Lodging House Travel Product)---Case 2

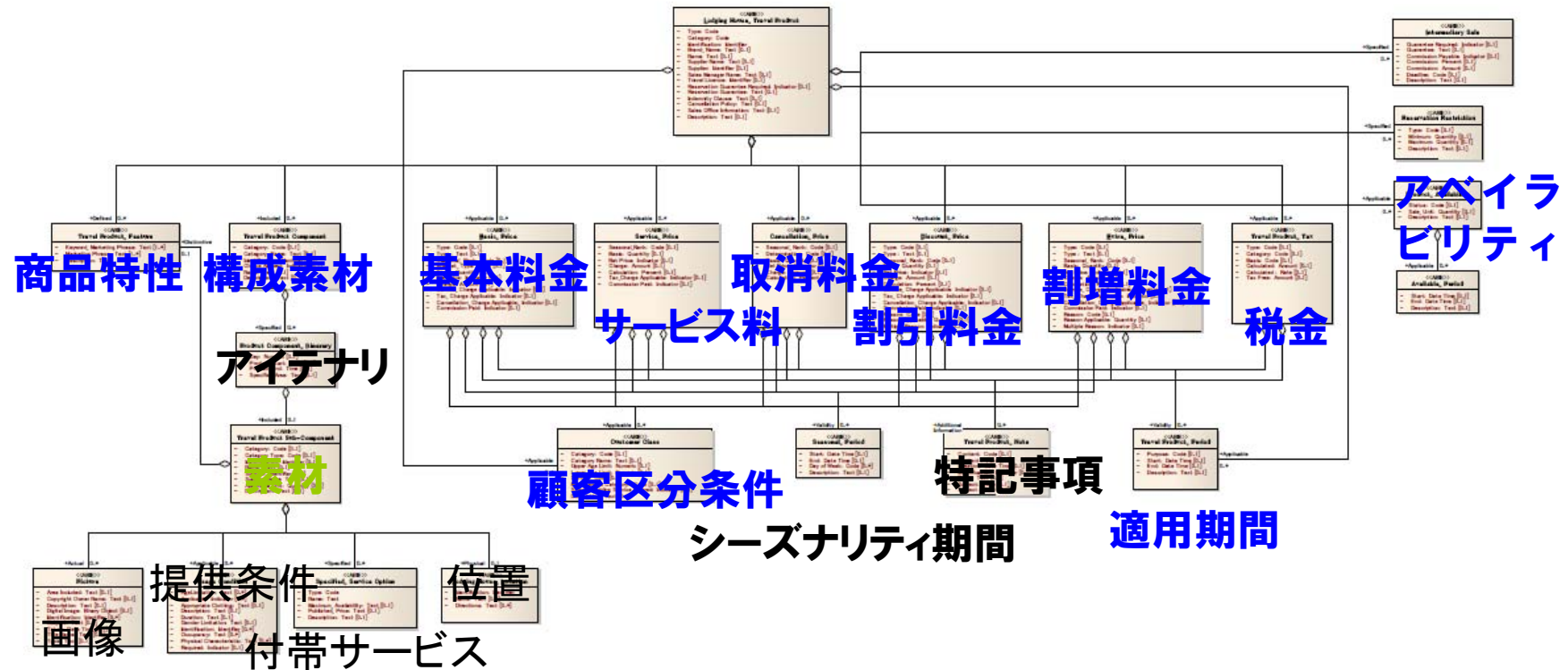
Customer

Supplier **旅館**



宿泊商品情報メッセージ

宿泊商品情報



LodgingHouseTravelProduct

- <LodgingHouseTravelProduct>

<ram:TypeCode>個人</ram:TypeCode>

<ram:CategoryCode>宿泊セットプラン(自販用)</ram:CategoryCode>

<ram:ID>set01</ram:ID>

<ram:BrandName/>

<ram:Name>武蔵野散策と大田原牛夕食プラン</ram:Name>

<ram:SupplierName>成蹊ホテル</ram:SupplierName>

<ram:SupplierID>seikei hotel</ram:SupplierID>

<ram:SalesManagerName/>

<ram:TravelLicenceID/>

<ram:ReservationGuaranteeIndicator/>

<ram:ReservationGuarantee>インター:

付の場合は、予約時点で契約は成立し

込の翌日化ら起算して、3日以内に申込

金のお支払いがなされない場合は、お申

</ram:ReservationGuarantee>

<ram:IndemnityClause>なし</ram:IndemnityClause>

<ram:CancellationPolicy>お客様は次に

て、旅行契約の解除をすることができま

金)から所定の取消料を差し引い払い戻

時は、そ差額を申し受けいたします。<

前まで取消 ①予約申込金全額 ②宿泊

相当宿泊代金の30%相当額 ③宿泊開始の前日での取消 宿泊開始日の1泊目宿泊

代金の50%相当額 ④宿泊開始日当日並びに無連絡の取消及び翌日以降の取消 宿

泊開始日の1泊目宿泊代金の全額</ram:CancellationPolicy>

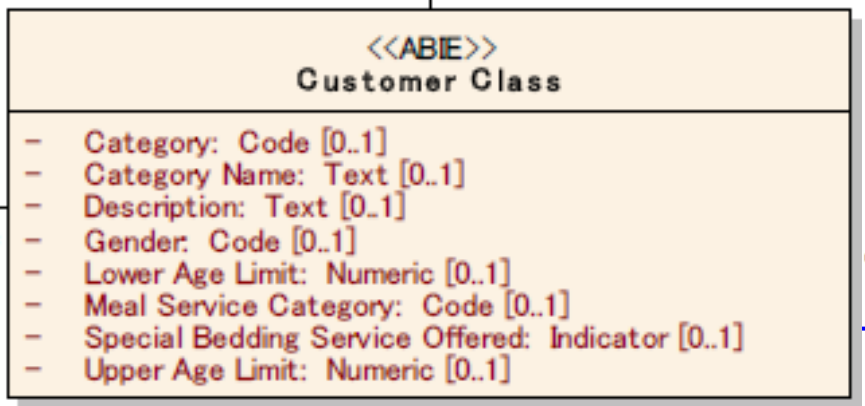
<<ABIE>>	
Lodging House_ Travel Product	
-	Brand_Name: Text [0..1]
-	Cancellation Policy: Text [0..1]
-	Category: Code
-	Description: Text [0..1]
-	Identification: Identifier
-	Indemnity Clause: Text [0..1]
-	Name: Text [0..1]
-	Reservation Guarantee: Text [0..1]
-	Reservation Guarantee Required: Indicator [0..1]
-	Sales Manager Name: Text [0..1]
-	Sales Office Information: Text [0..1]
-	Supplier: Identifier [0..1]
-	Supplier Name: Text [0..1]
-	Travel Licence: Identifier [0..1]
-	Type: Code

代金の50%相当額 ④宿泊開始日当日並びに無連絡の取消及び翌日以降の取消 宿
 泊開始日の1泊目宿泊代金の全額</ram:CancellationPolicy>

```

<ram:SalesOfficeInformation/>
<ram:Description/>
- <ram:ApplicableCustomerClass>
  <ram:CategoryCode>AD</ram:CategoryCode>
  <ram:CategoryName>大人</ram:CategoryName>
  <ram:UpperAgeLimitNumeric>59</ram:UpperAgeLimitNumeric>
  <ram:LowerAgeLimitNumeric>16</ram:LowerAgeLimitNumeric>
  <ram:GenderCode>C</ram:GenderCode>
  <ram:MealServiceCategoryCode/>
  <ram:SpecialBeddingServiceOfferedIndicator>true</ram:SpecialBeddingService
</ram:ApplicableCustomerClass>
- <ram:ApplicableCustomerClass>
  <ram:CategoryCode>CH2</ram:CategoryCode>
  <ram:CategoryName>中ノ
  <ram:UpperAgeLimitNum
  <ram:LowerAgeLimitNum
  <ram:GenderCode>C</ra
  <ram:MealServiceCategor
  <ram:SpecialBeddingServ
  </ram:ApplicableCustomerCla
- <ram:ApplicableCustomerClas
  <ram:CategoryCode>CH1
  <ram:CategoryName>小人</ram:CategoryName>
  <ram:UpperAgeLimitNumeric>12</ram:UpperAgeLimitNumeric>
  
```

寝具提供



+Applicable

0..*

C

```
C:\Users\Yoshihisa\Desktop\set01.xml
C:\Users\Yoshihisa\Desktop\... x

- <ram:DefinedTravelProductFeature>          商品特性
  <ram:KeywordMarketingPhrase>江戸期の古民家散策
  </ram:KeywordMarketingPhrase>
  <ram:KeywordMarketingPhrase>大田原牛料理
  </ram:KeywordMarketingPhrase>
  <ram:KeywordMarketingPhrase>貸切風呂</ram:KeywordMarketingPhrase>
  <ram:MarketingPhrase>五日市街道めぐりと大田原牛のしゃぶしゃぶ料理
  </ram:MarketingPhrase>
  <ram:Description/>
</ram:DefinedTravelProductFeature>

- <ram:ApplicableTravelProductPeriod>
  <ram:PurposeCode>予約日</ram:PurposeCode>          適用期間(予約日)
  <ram:StartDateTime>2011/07/17</ram:StartDateTime>
  <ram:EndDateTime>2011/12/31</ram:EndDateTime>
</ram:ApplicableTravelProductPeriod>

- <ram:ApplicableTravelProductPeriod>
  <ram:PurposeCode>利用日</ram:PurposeCode>          適用期間(利用日)
  <ram:StartDateTime>2011/07/17</ram:StartDateTime>
  <ram:EndDateTime>2011/12/31</ram:EndDateTime>
</ram:ApplicableTravelProductPeriod>
```


商品・構成素材・素材

アイテナリ(日程)・構成素材

素材

商品

武蔵野散策と
しゃぶしゃぶプラン



1日目 15時
和室



1日目夕食
(しゃぶしゃぶ)



2日目朝食
(和定食)



1日目
マッサージ



2日目10時
〇〇公園観光



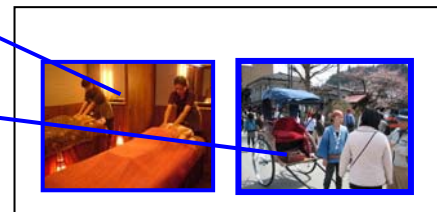
客室



料理飲食



送迎



その他

```
<ram:IncludedLodgingHouseTravelProductComponent> 構成素材(食事)
  <ram:CategoryCode>MEL</ram:CategoryCode>
  <ram:CategoryName>料理飲食</ram:CategoryName>
  <ram:ID>M01</ram:ID>
  <ram:ChoiceAllowedIndicator>true</ram:ChoiceAllowedIndicator>
  <ram:Name>大田原牛のしゃぶしゃぶと和定食</ram:Name>
  <ram:Description/>
- <ram:SpecifiedProductComponentItinerary> アイテナリ(1日目)
  <ram:DayNumeric>1</ram:DayNumeric>
  <ram:ProductStartTime>18:00</ram:ProductStartTime>
  <ram:ProductEndTime>20:00</ram:ProductEndTime>
  <ram:SpecifiedArea>食事処椿</ram:SpecifiedArea>
  - <ram:IncludedLodgingHouseTravelProductSubComponent>
    <ram:CategoryCode>料理飲食</ram:CategoryCode> 素材(D01)
    <ram:CategoryTypeCode>夕食</ram:CategoryTypeCode>
    <ram:ID>D01</ram:ID>
    <ram:Name>大田原牛のシャブシャブと地野菜料理</ram:Name>
    <ram:SupplierID/>
    <ram:SupplierName/>
    <ram:ApplicableUnitQuantity
      unitCode="人">1</ram:ApplicableUnitQuantity>
    <ram:Description/>
    - <ram:DistinctiveTravelProductFeature>
      <ram:MarketingPhrase/>
    </ram:DistinctiveTravelProductFeature>
  </ram:IncludedLodgingHouseTravelProductSubComponent>
</ram:SpecifiedProductComponentItinerary>
```



```
C:\Users\Yoshihisa\Desktop\set01.xml
C:\Users\Yoshihisa\Des... x

</ram:IncludedLodgingHouseTravelProductSubComponent>
</ram:SpecifiedProductComponentItinerary>
- <ram:SpecifiedProductComponentItinerary>
  <ram:DayNumeric>2</ram:DayNumeric> アイテナリ(2日目)
  <ram:ProductStartTime>8:00</ram:ProductStartTime>
  <ram:ProductEndTime>9:00</ram:ProductEndTime>
  <ram:SpecifiedArea>食事処椿</ram:SpecifiedArea>
  - <ram:IncludedLodgingHouseTravelProductSubComponent>
    <ram:CategoryCode>料理飲食</ram:CategoryCode>
    <ram:CategoryTypeCode>朝食</ram:CategoryTypeCode>
    <ram:ID>B02</ram:ID>
    <ram:Name>和朝食</ram:Name> 素材(B02)
    <ram:SupplierID/>
    <ram:SupplierName/>
    <ram:ApplicableUnitQuantity
      unitCode="人">1</ram:ApplicableUnitQuantity>
    <ram:Description/>
    - <ram:DistinctiveTravelProductFeature>
      <ram:MarketingPhrase/>
    </ram:DistinctiveTravelProductFeature>
  </ram:IncludedLodgingHouseTravelProductSubComponent>
</ram:SpecifiedProductComponentItinerary>
</ram:IncludedLodgingHouseTravelProductComponent>
```



```
C:\Users\Yoshihisa\Desktop\set01.xml
C:\Users\Yoshihisa\Desktop\... x

- <ram:ApplicableBasicPrice>                                基本料金
  <ram:TypeCode>1</ram:TypeCode>
  <ram:Type>税別サ別</ram:Type>
  <ram:SeasonalRankCode>B01</ram:SeasonalRankCode>
  <ram:BracketTypeCode>2</ram:BracketTypeCode>
  <ram:BasisQuantity unitCode="人">1</ram:BasisQuantity>
  <ram:NetPriceIndicator>false</ram:NetPriceIndicator>
  <ram:ChargeAmount currencyID="JPY">25000</ram:ChargeAmount>
  <ram:ServiceChargeApplicableIndicator>true</ram:ServiceChargeApplicableIndicator>
  <ram:TaxChargeApplicableIndicator>true</ram:TaxChargeApplicableIndicator>
  <ram:CancellationChargeApplicableIndicator>true</ram:CancellationChargeApplicableIndicator>
  <ram:CommissionPaidIndicator>false</ram:CommissionPaidIndicator>
- <ram:ValidityTravelProductPeriod>                          適用期間(予約日)
  <ram:PurposeCode>予約日</ram:PurposeCode>
  <ram:StartDateTime>2011/07/17</ram:StartDateTime>
  <ram:EndDateTime>2011/12/31</ram:EndDateTime>
</ram:ValidityTravelProductPeriod>
- <ram:ValidityTravelProductPeriod>                          適用期間(利用日)
  <ram:PurposeCode>利用日</ram:PurposeCode>
  <ram:StartDateTime>2011/07/17</ram:StartDateTime>
  <ram:EndDateTime>2011/12/31</ram:EndDateTime>
</ram:ValidityTravelProductPeriod>
- <ram:ValiditySeasonalPeriod>
  <ram:StartDateTime>2011/07/17</ram:StartDateTime>
  <ram:EndDateTime>2011/07/31</ram:EndDateTime>
  <ram:DayOfWeekCode>0</ram:DayOfWeekCode>
```

```
C:\Users\Yoshihisa\Desktop\set01.xml
C:\Users\Yoshihisa\Des... x
</ram:StartDateTime>2011/07/17</ram:StartDateTime>
  <ram:EndDateTime>2011/12/31</ram:EndDateTime>
</ram:ValidityTravelProductPeriod>
- <ram:ValiditySeasonalPeriod>
  <ram:StartDateTime>2011/07/17</ram:StartDateTime>
  <ram:EndDateTime>2011/07/31</ram:EndDateTime>
  <ram:DayOfWeekCode>0</ram:DayOfWeekCode>
  <ram:DayOfWeekCode>1</ram:DayOfWeekCode>
  <ram:DayOfWeekCode>2</ram:DayOfWeekCode>
  <ram:DayOfWeekCode>3</ram:DayOfWeekCode>
  <ram:DayOfWeekCode>4</ram:DayOfWeekCode> シーズナリティ期間
</ram:ValiditySeasonalPeriod>
- <ram:ValiditySeasonalPeriod>
  <ram:StartDateTime>2011/09/30</ram:StartDateTime>
  <ram:EndDateTime>2011/12/31</ram:EndDateTime>
  <ram:DayOfWeekCode>0</ram:DayOfWeekCode>
  <ram:DayOfWeekCode>1</ram:DayOfWeekCode>
  <ram:DayOfWeekCode>2</ram:DayOfWeekCode>
  <ram:DayOfWeekCode>3</ram:DayOfWeekCode>
  <ram:DayOfWeekCode>4</ram:DayOfWeekCode> シーズナリティ期間
</ram:ValiditySeasonalPeriod>
- <ram:ApplicableCustomerClass>
  <ram:CategoryCode>AD</ram:CategoryCode> 顧客区分条件
</ram:ApplicableCustomerClass>
</ram:ApplicableBasicPrice>
- <ram:ApplicableBasicPrice>
  <ram:TypeCode>1</ram:TypeCode>
```

```
C:\Users\Yoshihisa\Dropbox\善久\Intage2\XML\set01.xml
C:\Users\Yoshihisa\Dropbox\善久\Intage2\XML\set01.xml

</ram:ApplicableCustomerClass>
</ram:ApplicableCancellationPrice>
- <ram:ApplicableCancellationPrice> 取消料金
  <ram:ID>02</ram:ID>
  <ram:SeasonalRankCode>全ランク</ram:SeasonalRankCode>
  <ram:DeterminationCode>利用開始日の翌日以降</ram:DeterminationCode>
  <ram:BasisQuantity unitCode="人">1</ram:BasisQuantity>
  <ram:NetPriceIndicator>false</ram:NetPriceIndicator>
  <ram:CalculationPercent>100</ram:CalculationPercent>
  <ram:ServiceChargeApplicableIndicator>false</ram:ServiceChargeApplicableIndicator>
  <ram:TaxChargeApplicableIndicator>false</ram:TaxChargeApplicableIndicator>
  <ram:CommissionPaidIndicator>false</ram:CommissionPaidIndicator>
  - <ram:ValidityTravelProductPeriod>
    <ram:PurposeCode>予約日</ram:PurposeCode>
    <ram:StartDateTime>2011/07/17</ram:StartDateTime>
    <ram:EndDateTime>2011/12/31</ram:EndDateTime>
  </ram:ValidityTravelProductPeriod>
  - <ram:ValidityTravelProductPeriod>
    <ram:PurposeCode>利用日</ram:PurposeCode>
    <ram:StartDateTime>2011/07/17</ram:StartDateTime>
    <ram:EndDateTime>2011/12/31</ram:EndDateTime>
  </ram:ValidityTravelProductPeriod>
  - <ram:ApplicableCustomerClass>
    <ram:CategoryCode>AS</ram:CategoryCode>
  </ram:ApplicableCustomerClass>
</ram:ApplicableCancellationPrice>
</LodgingHouseTravelProduct>
```